

CERTIFICATE OF LOCATION OF GOVERNMENT CORNER

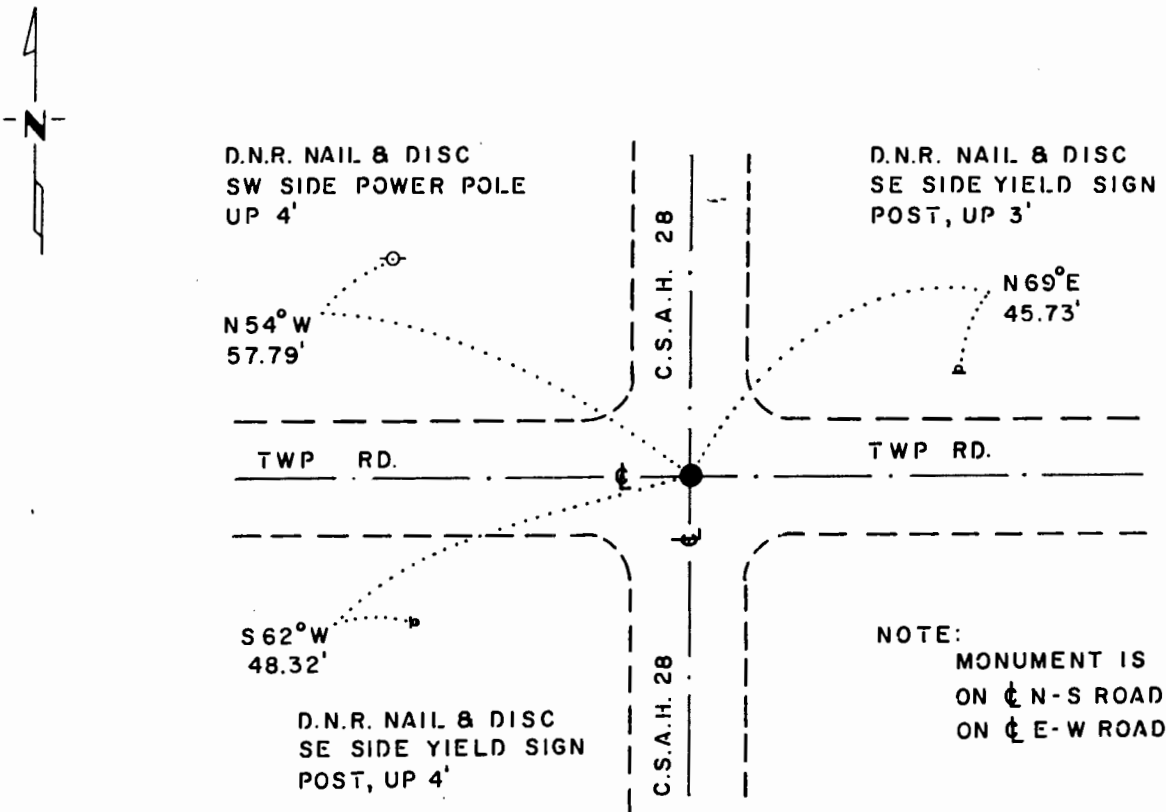
NORTHEAST Corner of Section 29, Township 106 N., Range 42 W., 5th P.M.

STATE OF MINNESOTA, County of MURRAY

At the corner location shown on the sketch:

- On 11-2-83 found a 3/4" x 8" REBAR, DOWN 3" OVER A 10" x 12" x 22" FIELD
DATE
STONE, DOWN 18"
 - left monument as found, lowered monument, removed monument (explain)
- On 11-2-83 placed a 1 1/4" x 1 1/4" x 12" PERFORATED STEEL TUBE WITH
DATE
ALUMINUM CAP STAMPED "D.N.R. SURVEY MARKER" OVER STONE, DOWN 0.4'

SKETCH OF REFERENCE TIES



BEARINGS OBSERVED WITH COMPASS

Statement of evidence relative to this corner location is on back of page.

J.B.M. 4-2-84
G-1158

I hereby certify that this document and the data contained herein was prepared by me or under my direct supervision.

Lowell R. Pomeroy 6-16-86
SIGNATURE DATE

Registration No. 17005

- Land Surveyor, Professional Engineer
- County Surveyor, County Engineer

OFFICE OF THE COUNTY RECORDER

County of _____

I hereby certify that this document was filed in the Co. Recorders office at _____ .M. on the _____ day of _____ A.D., 19 _____

County Recorder _____

By _____, Deputy

DOCUMENT NO. _____

Northeast Corner Section 29, Township 106 North, Range 42 West

This corner was originally established by the U. S. General Land Office survey in 1866. The government notes show corner marked with a wood post set in mound of earth with pits and trench dug around the mound.

In November 1983, the DNR Bureau of Engineering contacted the Murray County Offices of the Recorder and Highway Engineer for corner information.

The following information was obtained from the County Recorder's Office:
Surveyor's Record Book A, on Page 228, contains a survey by J. W. Woolstencraft, dated November 10, 1912. Survey shows corner is a 10" by 12" by 22" stone in a road, and measures 2640 ft. from the east quarter corner Section 20. This page of Record Book A also contains ties to the corner, date not indicated:
R.P. fence corner northwest 45.6 ft.
R.P. telephone pole northeast 72.5 ft.

Surveyor's Record Book A, on Page 229 contains a survey by J. W. Woolstencraft, dated November 20, 1912. Survey states see Section 20 survey (Page 228).

This information is also contained in a Surveyor's Record Book in the Highway Engineer's Office.

The following information was obtained from the County Highway Engineer's Office:

Surveyor's Record Book contains ties to government corners in Section 29 by F. A. March, date not indicated. Corner is shown as a stone with ties:
R.P. tack in telephone poles southeast 54.6 ft.
R.P. tack in corner fence post northeast 38.3 ft.
R.P. tack in northwest corner fence post 45.4 ft.

In November 1983 the DNR Bureau of Engineering traversed to the area of the corner and found a 3/4" by 8" rebar down 3" over a 10" by 12" by 22" field stone down 18". Left stone as found and set the rebar on the north side of stone. Searched for, but did not find any record ties.

Accept the found stone as the location of the corner.

Traverse information is available from the DNR Bureau of Engineering.

8hab/cors